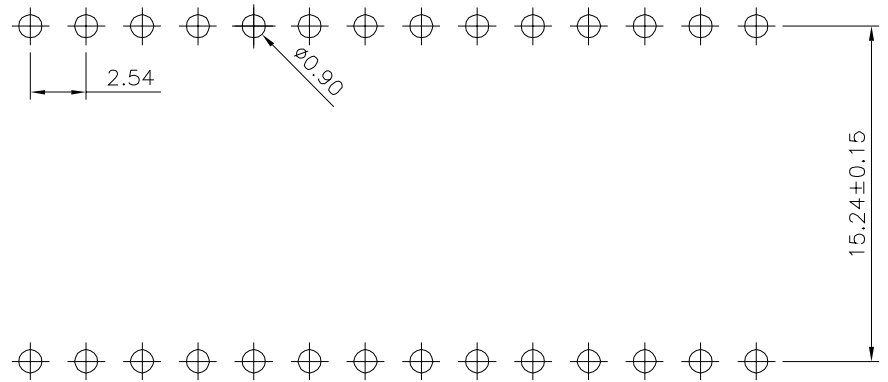
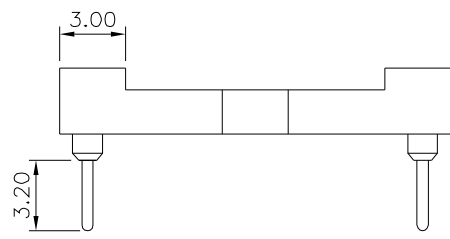
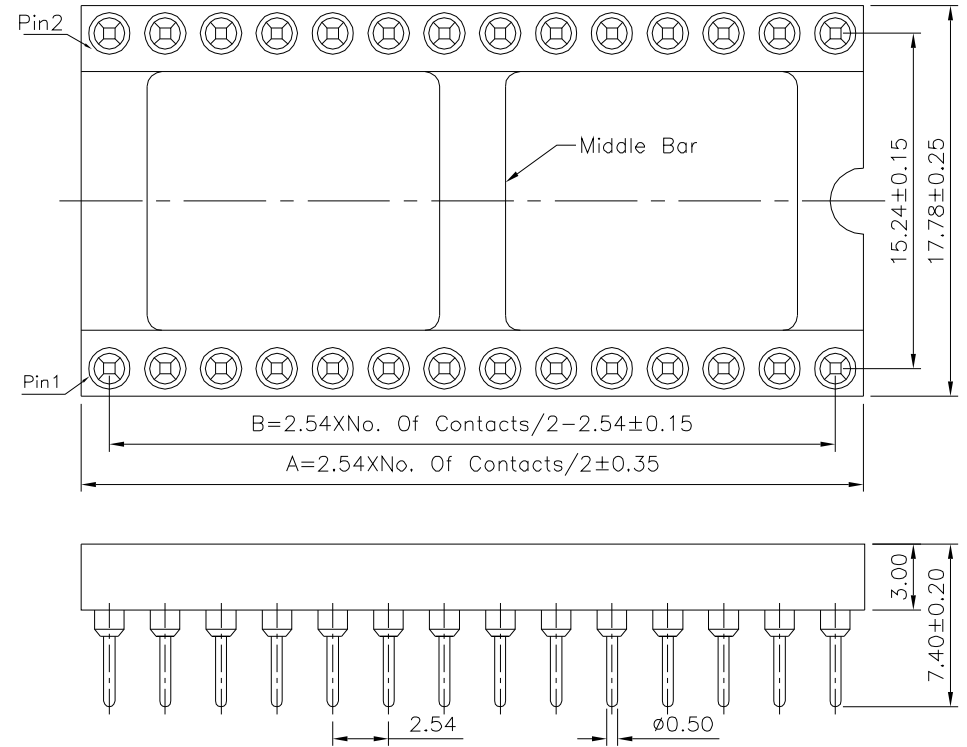


**SPECIFICATION**

Current Rating:3 Amps/Contact Max.  
 Contact Resistance:4 Milliohms/Contact Max.  
 Insulation Resistance:1000 Megaohms Min. At 100V  
 Operating Voltage:60V AC/DC  
 Average Insertion Force With Steel Pin Of  
 ø0.43mm:<250g  
 Average Withdrawal Force With Steel Pin Of  
 ø0.43mm:>50g  
 Mechanical Life Cycle:200 Min.  
 Operating Temperatures:Gold Plated:-55°C~+105°C  
 Tin Plated:-40°C~+105°C  
 Soldering Temperature:+220°C,10s Max.  
 Pin(Outer Sleeve):Brass,Tin Plated Over Nickel  
 Clip(Contact 4 Finger):Beryllium Copper,Gold Flash  
 Over Nickel  
 Insulator(Housing):PBT+30%G.F.(UL94V-0),Black  
 RoHS Compliant



Recommended P.C.B. Layout



Pin	A	B	Type
20	25.40	22.86	Without Bar
24	30.48	27.94	With Bar
28	35.56	33.02	
32	40.64	38.10	
40	50.80	48.26	
42	53.34	50.80	
48	60.96	58.42	
64	81.28	78.74	

**4UCON** 元化興業股份有限公司  
 4UCON TECHNOLOGY INC.

DRAWING No. 19137  
 SCALE NONE

APPROVED BY MEI  
 CHECKED BY HZF  
 DRAWING BY CYP  
 REV. BO

UNLESS OTHERWISE SPECIFIED TOLERANCES ARE  
 X. ±0.50  
 XX ±0.40  
 XXX ±0.25  
 .XXX ±0.15  
 ANG. ±5°  
 UNIT mm

NO.	REV.	REVISIONS	CHK	DATE
△ BO		NEW RELEASE	HZF	09/15/2021