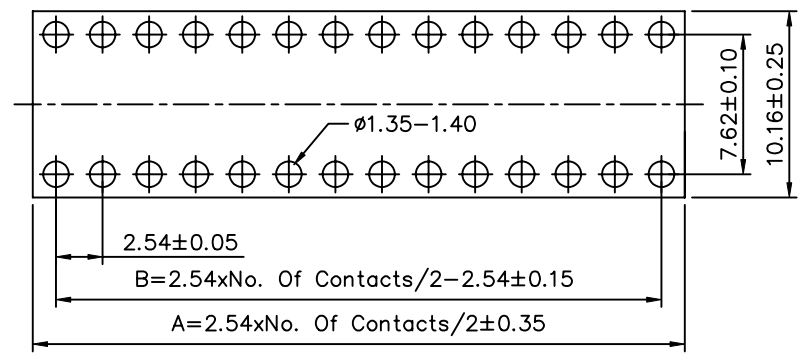
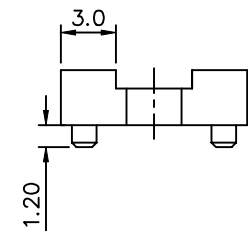
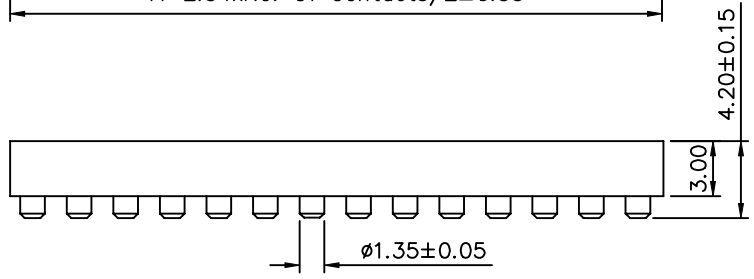
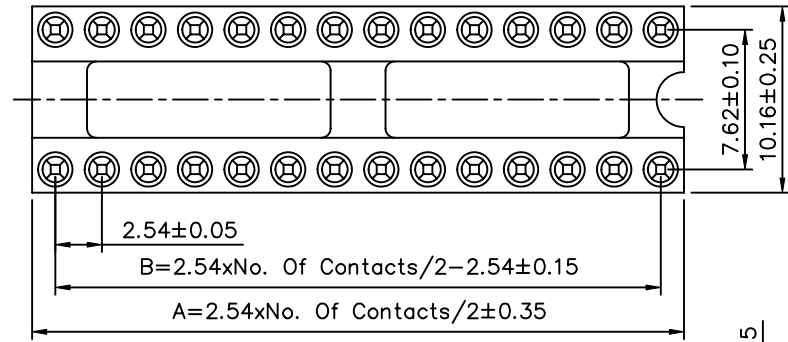


SPECIFICATION

Current Rating: 3 Amp/Contact Max.
 Contact Resistance: 4 Milliohms Max./Contact
 Insulation Resistance: 1000 Megaohms Min. At 100V
 Operating Voltage: 60V AC/DC
 Average Insertion Force With Steel Pin Of $\phi 0.43\text{mm}$: <250g
 Average Withdrawal Force With Steel Pin Of $\phi 0.43\text{mm}$: >50g
 Mechanical Life Cycle: 200 Min.
 Operating Temperature: Gold Plated: -55°C To $+105^{\circ}\text{C}$
 Tin Plated: -40°C To $+105^{\circ}\text{C}$
 Soldering Temperature: $+260^{\circ}\text{C}$, 10s Max.
 Pin(Outer Sleeve): Brass, Machined CuZn38Pb2
 Clip(Contact 4 Finger): Beryllium Copper, Heat Treated
 Plating(Outer Sleeve): Tin Plated: $2\mu\text{m}/80\text{u}''$ Ni, $5\mu\text{m}/200\text{u}''$ Sn
 Gold Plated: $2\mu\text{m}/80\text{u}''$ Ni, Full Gold
 Plating(Contact): $2\mu\text{m}/80\text{u}''$ Ni, Gold Or Tin Plated
 Insulator(Black): PBT Glass Filled Thermoplastic Polyester
 UL 94V-0 Rated
 RoHS Compliant



PCB Layout

No. Of Contacts	A	B
06	7.62	5.08
08	10.16	7.62
14	17.78	15.24
16	20.32	17.78
18	22.86	20.32
20	25.40	22.86
24	30.48	27.94
28	35.56	33.02

4UCON 元化興業股份有限公司
 4UCON TECHNOLOGY INC.

DRAWING No.		APPROVED BY		UNLESS OTHERWISE SPECIFIED TOLERANCES ARE X. ± 0.35 .X ± 0.20 .XX ± 0.15 .XXX ± 0.05 ANG. $\pm 5^{\circ}$	
10182		MEI			
		CHECKED BY	BECKY		
		DRAWING BY	TCF		
SCALE	NONE	REV.	A0	UNIT	mm

NO.	REV.	REVISIONS	CHK	DATE
△ A0		NEW RELEASE	BECKY	07/13/2005