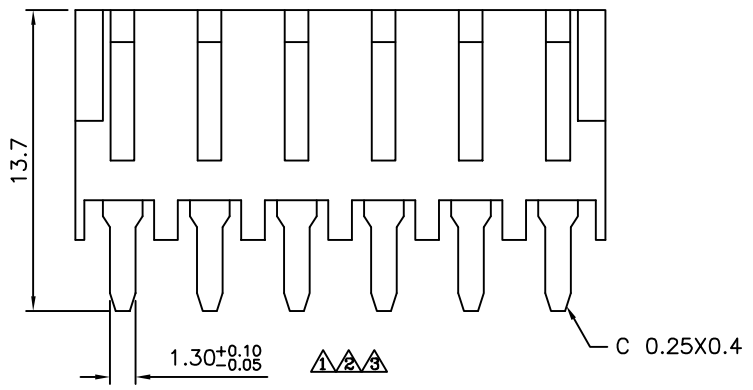
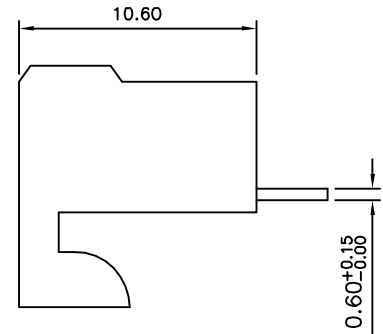
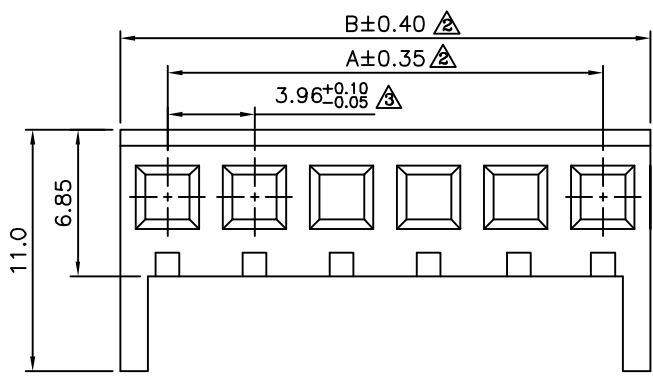


△ Recommended P.C.B. Layout



△ SPECIFICATION
 △ Current:4A Max.
 Voltage:250V AC Max.
 Dielectric Withstanding Voltage:1000V AC
 Contact Resistance:10 Milliohms Max.
 Insulation Resistance:1000 Megaohms Min.
 Operating Temperature:0°C~+50°C
 △ Housing:PA66(UL94V-2),White
 Contact:Brass,Tin Plated Over Nickel
 RoHS Compliant

Pin	A	B
02	3.96	8.06
03	7.92	12.02
04	11.88	15.98
05	15.84	19.94
06	19.80	23.90
07	23.76	27.86
08	27.72	31.82
09	31.68	35.78
10	35.64	39.74
11	39.60	43.70
12	43.56	47.66
13	47.52	51.62
14	51.48	55.58
15	55.44	59.54
16	59.40	63.50

4UCON 元化興業股份有限公司
 4UCON TECHNOLOGY INC.

DRAWING No.		APPROVED BY		UNLESS OTHERWISE SPECIFIED TOLERANCES ARE .X ±0.35 .XX ±0.10 ANG.
05494		EMILY		
		CHECKED BY HZF		
		DRAWING BY HAO		UNIT mm
SCALE	NONE	REV.	A3	

NO.	REV.	REVISIONS	CHK	DATE
△ A3		Modify Data	HZF	11/07/2014
△ A2		Modify Data	HZF	08/20/2012
△ A1		Modify Data	HZF	12/18/2009
△ A0		NEW RELEASE		