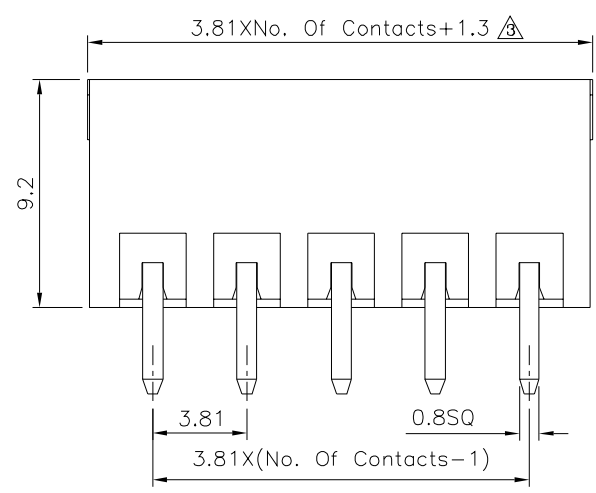
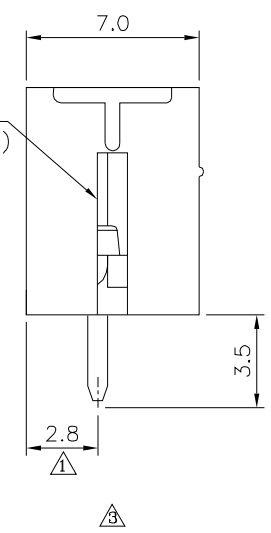


Recommended P.C.B. Layout



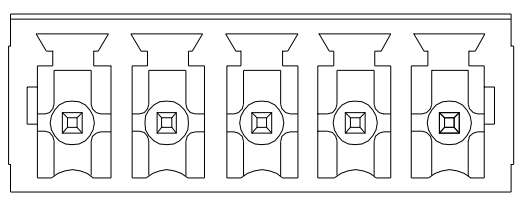
2P To 6P Open Type
Above 7P (Including 7P)
Close Type

| Length(L) | Tolerances |
|-----------|------------|
| 0~30 | ±0.30 |
| 30~60 | ±0.40 |
| 60~120 | ±0.50 |
| 120~220 | ±0.60 |



△△ SPECIFICATION

Current Rating:12A/Way Max.
Voltage Rating:300V AC
Withstanding Voltage:1600V AC/Minute
Operation Temperature:-40°C~+105°C
Solder Pin:Copper Alloy,Tin Plated
Insulator Body:Polyamide(UL94V-0),Green
RoHS Compliant



4UCON 元化興業股份有限公司
4UCON TECHNOLOGY INC.

DRAWING No. △△
11669

APPROVED BY Jason Wu
CHECKED BY Leo Han
DRAWING BY Michelle Lee

UNLESS OTHERWISE SPECIFIED TOLERANCES ARE △△
X. ±0.50
.X ±0.40
.XX ±0.30
ANG. ±1°

SCALE NONE REV. A3 UNIT mm

| NO. | REV. | REVISIONS | CHK | DATE |
|-----|------|-------------|-----|------------|
| △ | A3 | Modify Mata | HZF | 06/15/2026 |
| △ | A2 | Modify Mata | HZF | 01/30/2016 |
| △ | A1 | Modify Mata | HZF | 08/14/2012 |
| △ | A0 | NEW RELEASE | HZF | 04/10/2009 |