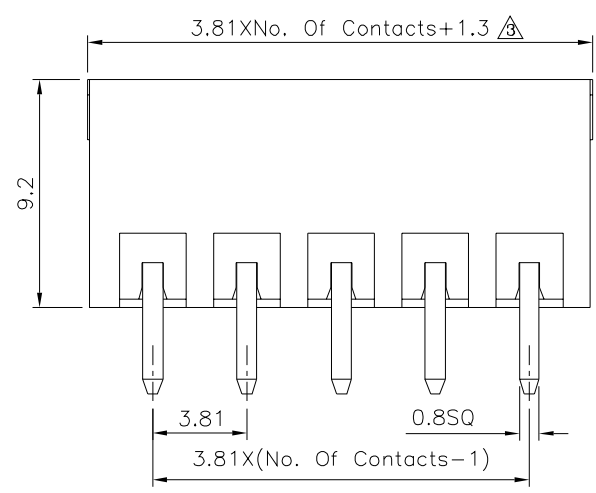
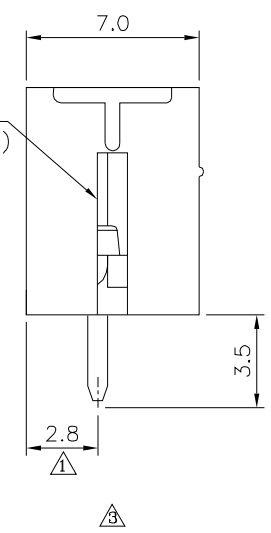


Recommended P.C.B. Layout



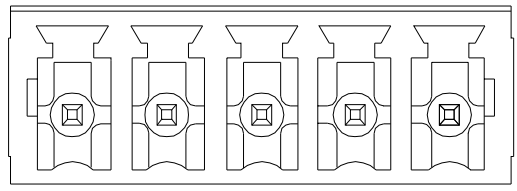
2P To 6P Open Type
Above 7P (Including 7P)
Close Type

Length(L)	Tolerances
0~30	±0.30
30~60	±0.40
60~120	±0.50
120~220	±0.60



△△ SPECIFICATION

Current Rating:12A/Way Max.
Voltage Rating:300V AC
Withstanding Voltage:1600V AC/Minute
Operation Temperature:-40°C~+105°C
Solder Pin:Copper Alloy,Tin Plated
Insulator Body:Polyamide(UL94V-0),Green
RoHS Compliant



4UCON 元化興業股份有限公司
4UCON TECHNOLOGY INC.

DRAWING No. △△
11414

APPROVED BY Jason Wu
CHECKED BY Leo Han
DRAWING BY Michelle Lee

UNLESS OTHERWISE SPECIFIED TOLERANCES ARE △△
X. ±0.50
.X ±0.40
.XX ±0.30
ANG. ±1°

SCALE NONE REV. A3 UNIT mm

NO.	REV.	REVISIONS	CHK	DATE
△	A3	Modify Mata	HZF	06/15/2026
△	A2	Modify Mata	HZF	01/30/2016
△	A1	Modify Mata	HZF	08/14/2012
△	A0	NEW RELEASE	HZF	04/10/2009