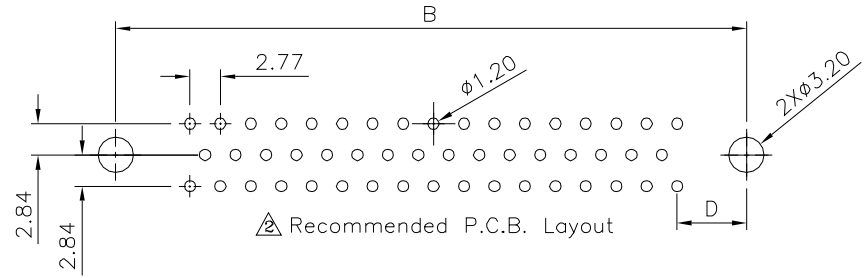
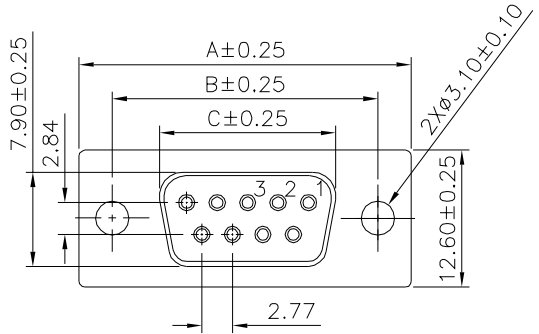


Recommended P.C.B. Layout

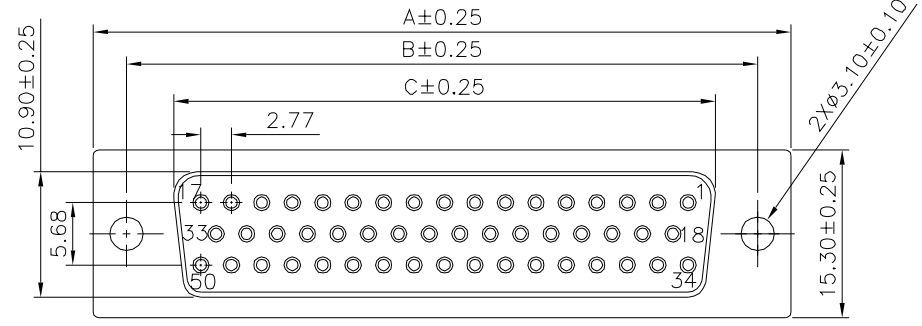


Recommended P.C.B. Layout

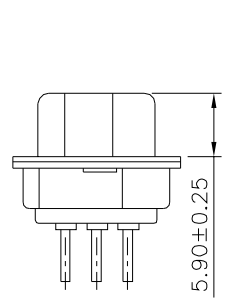
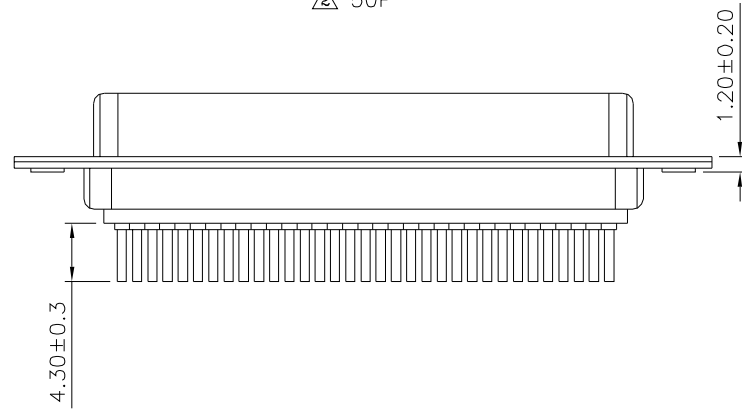
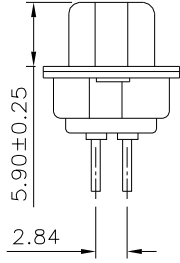
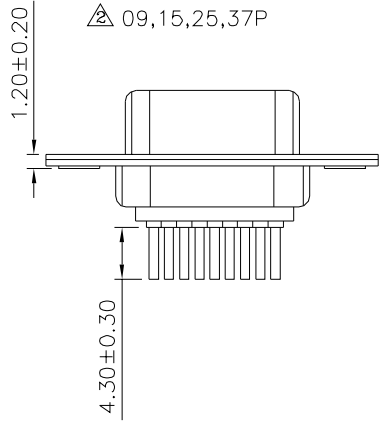
SPECIFICATION
 Current Rating: 1A Max.
 Dielectric Withstanding Voltage: 500V AC For 1 Minute
 Contact Resistance: 30 Milliohms Max.
 Insulation Resistance: 1000 Megaohms Min. At DC 500V
 Temperature Range: -55°C ~ +105°C
 Housing: PBT(UL94V-0), Black
 Contact: Brass, Gold Flash Over Nickel
 Front Shell: Steel, Nickel Plated
 Back Shell: Steel, Tin Plated
 RoHS Compliant



09, 15, 25, 37P



50P



Pin	A	B	C	D
09	30.80	25.00	16.30	6.96
15	39.20	33.32	24.70	6.96
25	53.05	47.04	38.40	6.90
37	69.40	63.50	54.80	6.82
50	67.10	61.00	52.20	8.34

4UCON 元化興業股份有限公司
 4UCON TECHNOLOGY INC.

DRAWING No.		APPROVED BY		UNLESS OTHERWISE SPECIFIED TOLERANCES ARE .X ± 0.30 .XX ± 0.20 .XXX ± 0.10 ANG. $\pm 1^\circ$
17889		MEI		
		HZF		
DRAWING BY		SONG		
SCALE	NONE	REV.	A2	UNIT mm

NO.	REV.	REVISIONS	CHK	DATE