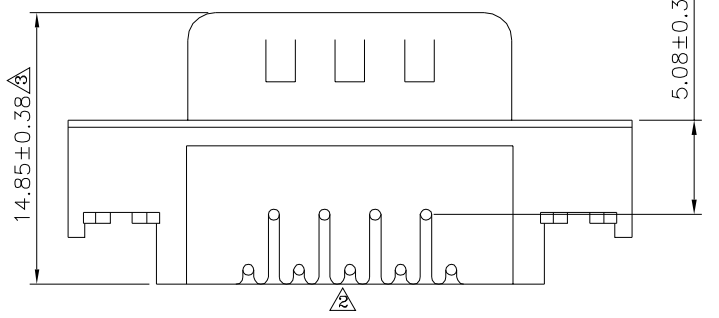
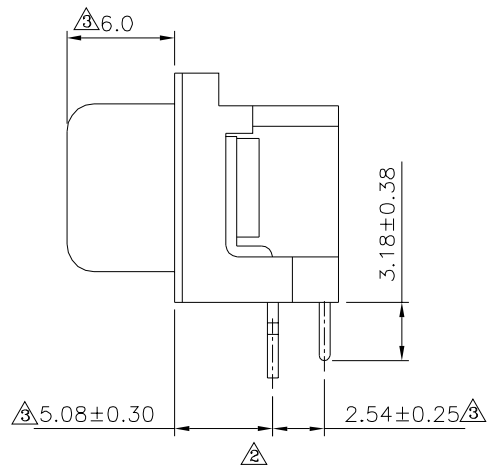
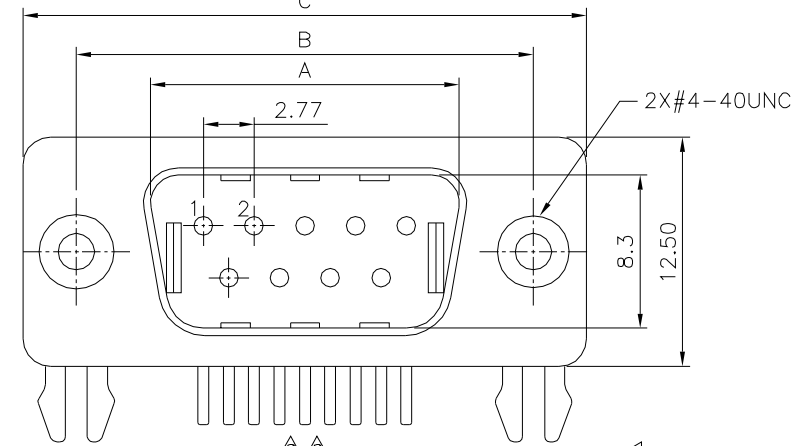


Recommended P.C.B. Layout



**△△ SPECIFICATION**

Current Rating:5 Amp  
 Withstanding Voltage:1000V AC/Minute  
 Insulation Resistance:1000 Megaohms Min. At 500V DC  
 Contact Resistance:30 Milliohms Max.  
 Operation Temperature:-55°C~+105°C  
 Insulator:PBT(UL94V-0)  
 Contact:Brass,Gold Flash On Contact Area,  
 Tin Plated On Solder Tails,Over Nickel  
 Shell:Steel,Nickel Plated  
 Harpoon:Steel,Tin Plated△  
 Riveted Insert:Brass,Nickel Plated  
 RoHS Compliant

△△ Pin	A±0.25	B±0.25	C±0.38	D
09	16.90	25.00	30.80	11.08
15	25.25	33.30	39.20	19.39
25	38.95	47.05	53.05	33.24

**4UCON** 元化興業股份有限公司  
 4UCON TECHNOLOGY INC.

DRAWING No. △		APPROVED BY		UNLESS OTHERWISE SPECIFIED TOLERANCES ARE .X ±0.35 .XX ±0.25 .XXX ±0.15 ANG. ±1° UNIT mm
14423		EMILY		
		CHECKED BY		
		HZF		
		DRAWING BY		△
		CYP		
SCALE	NONE	REV.	A3	△

△ A3	Modify Data	HZF	06/17/2020
△ A2	Modify Data	HZF	12/01/2014
△ A1	Modify Data	HZF	08/20/2009
△ A0	NEW RELEASE	HZF	11/19/2008
NO. REV.	REVISIONS	CHK	DATE