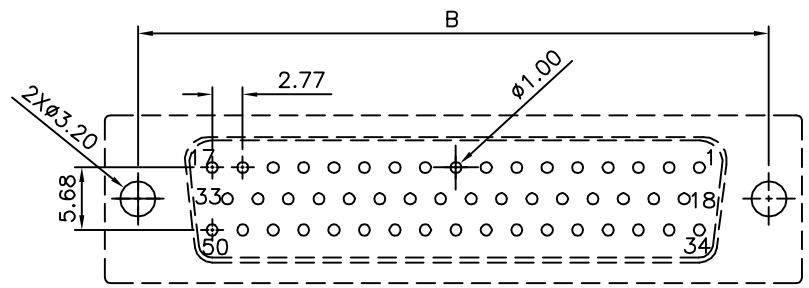
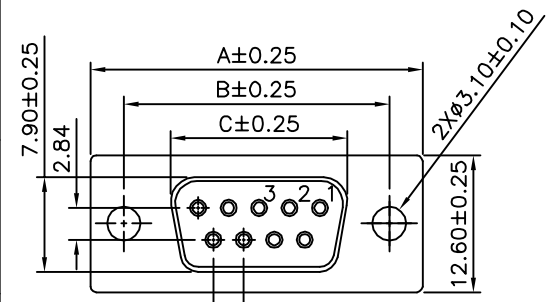


Recommended P.C.B. Layout

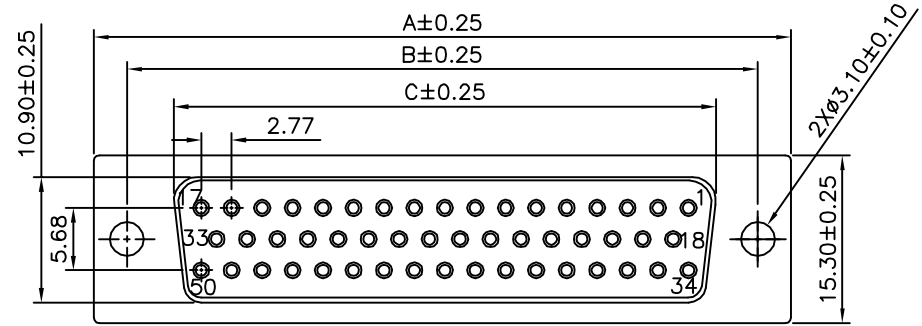


Recommended P.C.B. Layout

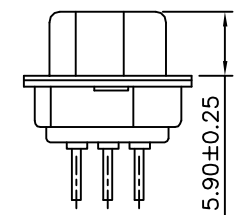
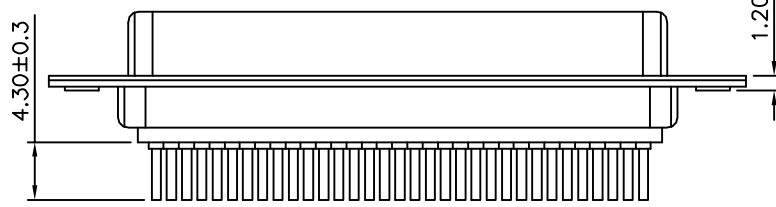
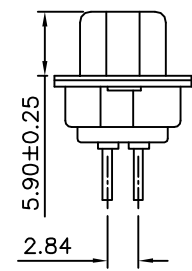
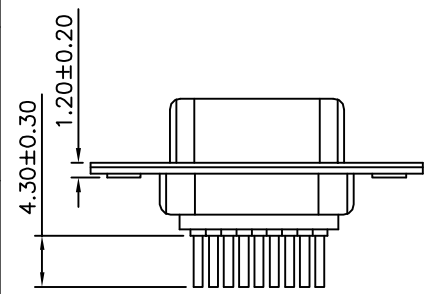
SPECIFICATION
 Current Rating:1A Max.
 Dielectric Withstanding Voltage:500V AC
 For 1 Minute
 Contact Resistance:30 Milliohms Max.
 Insulation Resistance:1000 Megaohms Min.
 At DC 500V
 Temperature Range:-55°C~+105°C
 Housing:PBT(UL94V-0),White
 Contact:Brass,Gold Flash Over All,Over Nickel
 Front Shell:Cold Rolled Steel,Nickel Plated
 Over Copper
 Back Shell:Cold Rolled Steel,Tin Plated Over
 Copper
 RoHS Compliant



09,15,25,37P



50P



Pin	A	B	C
09	30.80	25.00	16.30
15	39.20	33.32	24.70
25	53.05	47.04	38.40
37	69.40	63.50	54.80
50	67.10	61.00	52.20

4UCON 元化興業股份有限公司
 4UCON TECHNOLOGY INC.

DRAWING No.		APPROVED BY		UNLESS OTHERWISE SPECIFIED TOLERANCES ARE .X ±0.30 .XX ±0.20 .XXX ±0.10 ANG. ±1°
02899		MEI		
		HZF		
		DRAWING BY		
		SONG		
SCALE	NONE	REV.	A0	UNIT mm

NO.	REV.	REVISIONS	CHK	DATE
△ A0		NEW RELEASE	HZF	03/19/2012