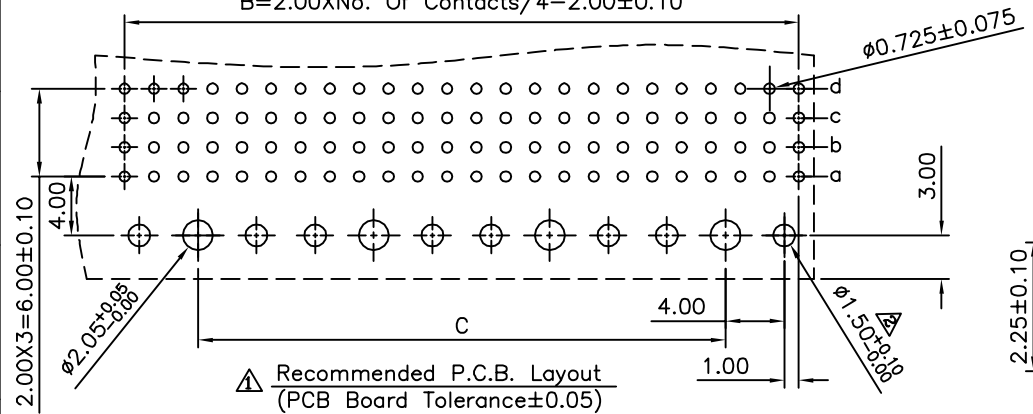
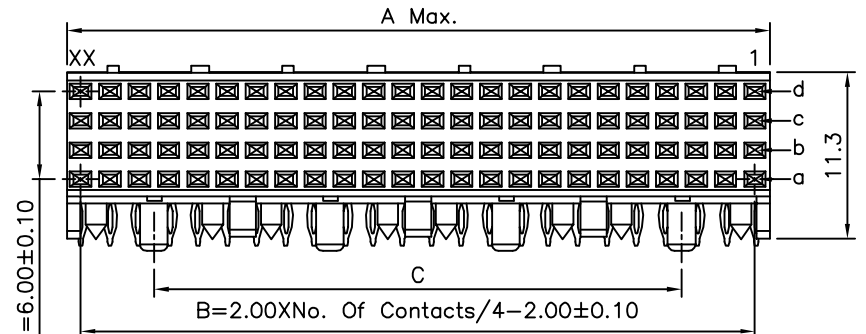


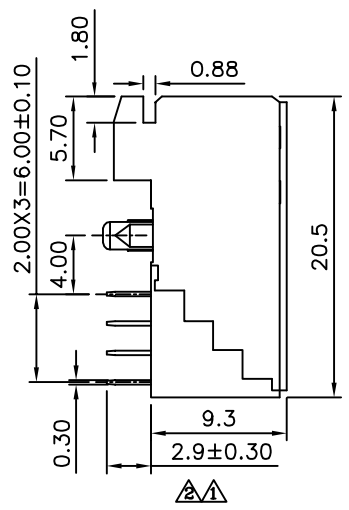
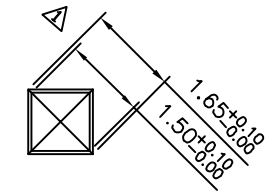
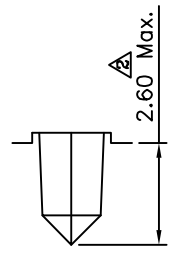
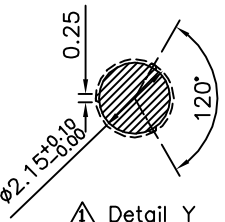
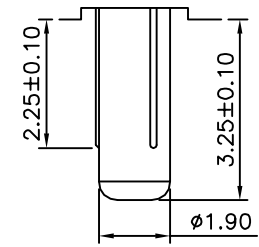
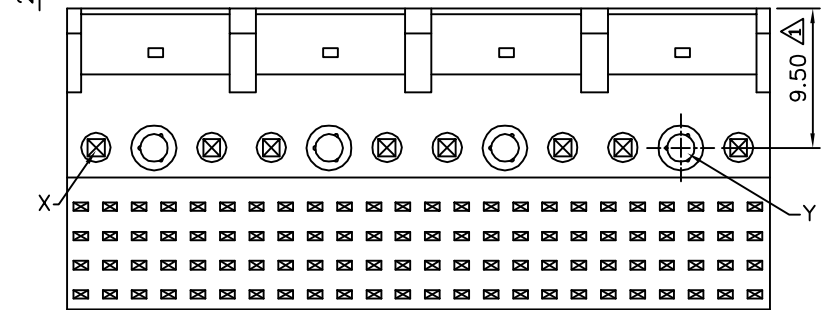
B=2.00XNo. Of Contacts/4-2.00±0.10



Recommended P.C.B. Layout  
(PCB Board Tolerance±0.05)



Recommended P.C.B. Layout  
(PCB Board Tolerance±0.05)



**SPECIFICATION**

- Current Rating:1 Amp
- Dielectric Withstanding Voltage:AC 1000V For 1 Minute
- Insulation Resistance:1000 Megaohms Min. At DC 500V
- Contact Resistance:30 Milliohms Max. At DC 100mA
- Operation Temperature:-55°C~+125°C
- Housing:LCP(UL94V-0)
- Contact:Phosphor Bronze
- Gold Plated 10u" On Contact Area,Tin Plated On Solder Tails,Over Nickel
- RoHS Compliant

| Pin | A     | B    | C    |
|-----|-------|------|------|
| 24  | 11.95 | 10.0 | 0    |
| 48  | 23.95 | 22.0 | 12.0 |
| 72  | 35.95 | 34.0 | 24.0 |
| 96  | 47.95 | 46.0 | 36.0 |
| 120 | 59.95 | 58.0 | 48.0 |
| 144 | 71.95 | 70.0 | 60.0 |
| 168 | 83.95 | 82.0 | 72.0 |
| 192 | 95.95 | 94.0 | 84.0 |

**4UCON** 元化興業股份有限公司  
4UCON TECHNOLOGY INC.

|             |      |             |    |   |
|-------------|------|-------------|----|---|
| DRAWING No. |      | APPROVED BY |    | UNLESS OTHERWISE SPECIFIED TOLERANCES ARE |
| 18212       |      | EMILY       |    |   |
|             |      | CHECKED BY  |    |   |
|             |      | HZF         |    | X. ±0.5<br>.X ±0.25<br>.XX ±0.15          |
|             |      | DRAWING BY  |    |   |
|             |      | SONG        |    | UNIT                                      |
| SCALE       | NONE | REV.        | A2 | mm  |

|     |      |             |     |            |
|-----|------|-------------|-----|------------|
| NO. | REV. | REVISIONS   | CHK | DATE       |
| A2  |      | Modify Data | HZF | 12/20/2013 |
| A1  |      | Modify Data | HZF | 03/05/2010 |
| A0  |      | NEW RELEASE | HZF | 06/20/2009 |