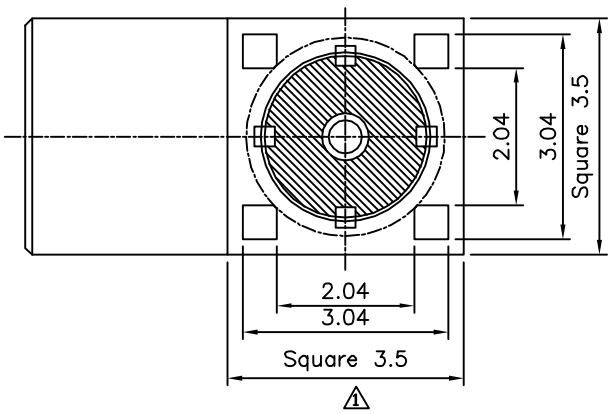


Recommended P.C.B. Layout

**△△SPECIFICATION**

Impedance: 50 Ohms  
 Frequency Range: DC ~6 GHz  
 Working Voltage: 170V AC  
 Insulation Resisitance: 1000 Megaohms Min.  
 Withstanding Voltage: 500V AC For 1 Minute  
 Contact Resistance: Center Contact:  
     Centerr Contact: 5.0 Milliohms Max.  
     Outer Contact: 2.5 Milliohms Max.  
 Mating: Push-Pull  
 V.S.W.R: 1.5 Max.  
 Temperature Range: -65°C~+165°C  
 RoHS Compliant



No.	Description	Material	Q'ty	Remark
4	Insulator	Teflon	1	
3	Center Pin	Beryllium Copper	1	Gold Plated Over Nickel
2	Insulator	Teflon	1	
1	Body	Brass	1	Gold Plated Over Nickel

**4UCON** 元化興業股份有限公司  
 4UCON TECHNOLOGY INC.

DRAWING No. 07249

APPROVED BY EMILY  
 CHECKED BY HZF  
 DRAWING BY HTP

UNLESS OTHERWISE SPECIFIED TOLERANCES ARE  
 X. ±0.1  
 .X ±0.1  
 .XX ±0.1

SCALE NONE

REV. A2



NO.	REV.	REVISIONS	CHK	DATE
△2	A2	Modify Data	HZF	03/13/2024
△1	A1	Modify Data	HZF	12/14/2021
△0	A0	NEW RELEASE	HZF	09/21/2011