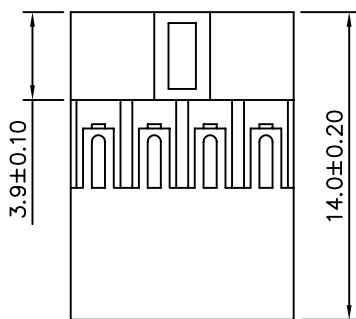
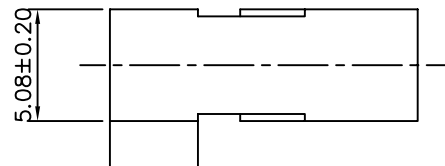
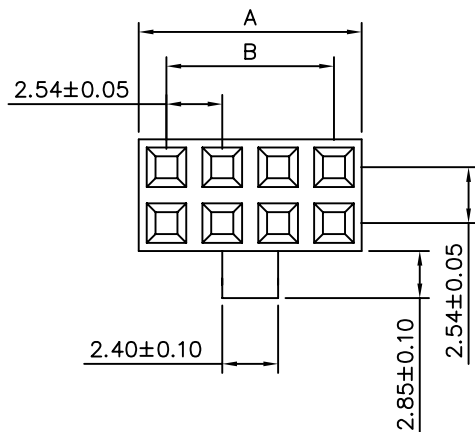


**△ SPECIFICATIONS**

Current Rating: 3A AC,DC  
 Voltage Rating: 250V AC,DC  
 Temperature Range: -25°C~+85°C  
 Insulation Resistance: 1000 Megohms Min.  
 Withstand Voltage: 800V AC/Minute  
 Material: Noryl-V2,Black



Circuits	Dim.A	Dim.B	Circuits	Dim.A	Dim.B
4	5.08	2.54	44	55.88	53.34
6	7.62	5.08	46	58.42	55.88
8	10.16	7.62	48	60.96	58.42
10	12.70	10.16	50	63.50	60.96
12	15.24	12.70	52	66.04	63.50
14	17.78	15.24	54	68.58	66.04
16	20.32	17.78	56	71.12	68.58
18	22.86	20.32	58	73.66	71.12
20	25.40	22.86	60	76.20	73.66
22	27.94	25.40	62	78.74	76.20
24	30.48	27.94	64	81.28	78.74
26	33.02	30.48	66	83.82	81.28
28	35.56	33.02	68	86.36	83.82
30	38.10	35.56	70	88.90	86.36
32	40.64	38.10	72	91.44	88.90
34	43.18	40.64	74	93.98	91.44
36	45.72	43.18	76	96.52	93.98
38	48.26	45.72	78	99.06	96.52
40	50.80	48.26	80	101.60	99.06
42	53.34	50.80	100	127.00	124.46

Dim.A,Dim.B Tolerance

2x2P~2x10P	±0.10
2x11P~2x20P	±0.20
2x21P~2x30P	±0.30
2x31P~2x40P	±0.40
2x41P~2x50P	±0.50

**4UCON** 元化興業股份有限公司  
 4UCON TECHNOLOGY INC.

DRAWING No.

06881

APPROVED BY

MEI

CHECKED BY

BECKY

DRAWING BY

HZF

UNLESS OTHERWISE SPECIFIED TOLERANCES ARE

.X ±0.38

.XX ±0.25

ANG.

UNIT

mm



SCALE

NONE

REV.

A2

NO.REV.

REVISIONS

CHK

DATE

△ A2 Modify Spec. BECKY 10/04/2005

△ A1 Modify Data BECKY 03/16/2005

△ A NEW RELEASE RAN