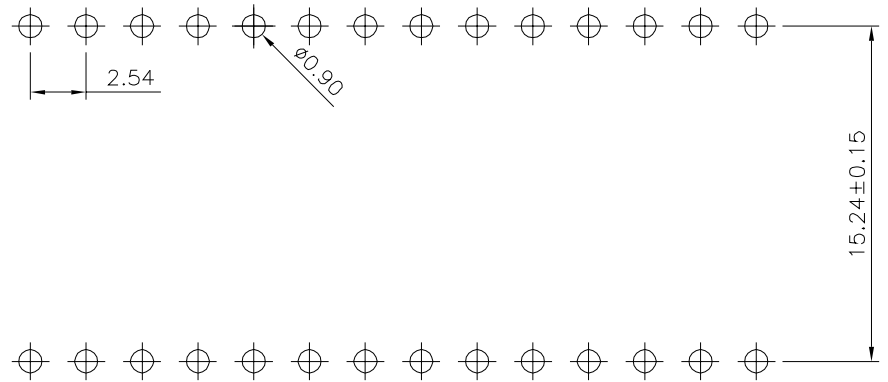
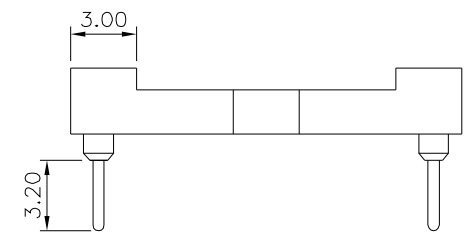
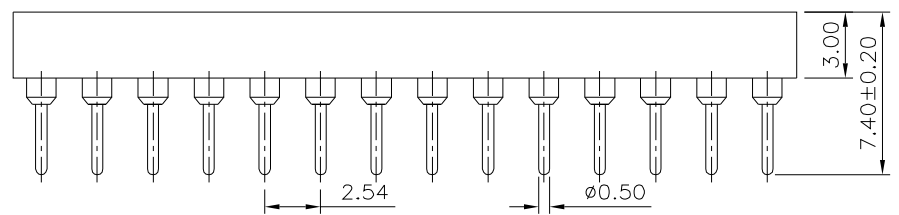
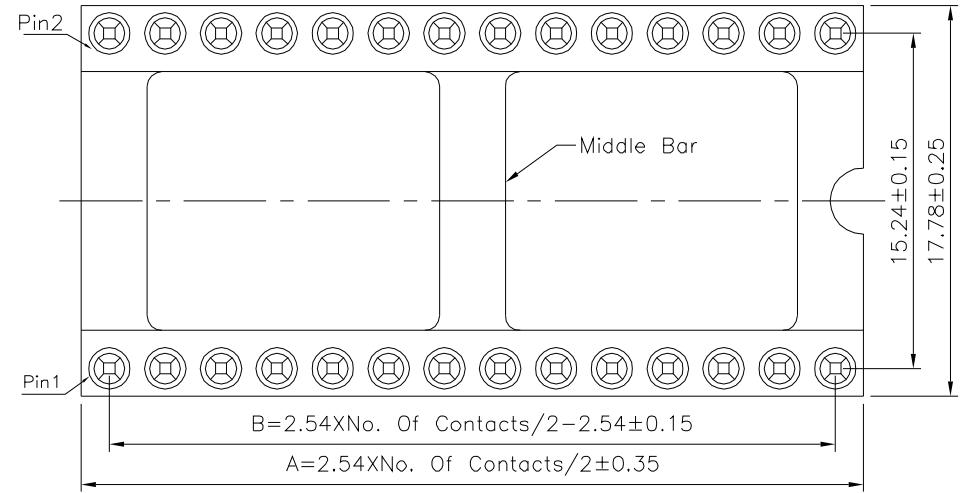


SPECIFICATION

Current Rating:3 Amps/Contact Max.
 Contact Resistance:4 Milliohms/Contact Max.
 Insulation Resistance:1000 Megaohms Min. At 100V
 Operating Voltage:60V AC/DC
 Average Insertion Force With Steel Pin Of
 ø0.43mm:<250g
 Average Withdrawal Force With Steel Pin Of
 ø0.43mm:>50g
 Mechanical Life Cycle:200 Min.
 Operating Temperatures:Gold Plated:-55°C~+105°C
 Tin Plated:-40°C~+105°C
 Soldering Temperature:+220°C,10s Max.
 Pin(Outer Sleeve):Brass,Tin Plated Over Nickel
 Clip(Contact 4 Finger):Beryllium Copper,Gold Flash
 Over Nickel
 Insulator(Housing):PBT+30%G.F.(UL94V-0),Black
 RoHS Compliant



Recommended P.C.B. Layout



| Pin | A | B | Type |
|-----|-------|-------|-------------|
| 20 | 25.40 | 22.86 | Without Bar |
| 24 | 30.48 | 27.94 | With Bar |
| 28 | 35.56 | 33.02 | |
| 32 | 40.64 | 38.10 | |
| 40 | 50.80 | 48.26 | |
| 42 | 53.34 | 50.80 | With Bar |
| 48 | 60.96 | 58.42 | |
| 64 | 81.28 | 78.74 | |

4UCON 元化興業股份有限公司
 4UCON TECHNOLOGY INC.

| | | | | |
|-------------|------|----------------|----|--|
| DRAWING No. | | APPROVED BY | | UNLESS OTHERWISE SPECIFIED TOLERANCES ARE X. ±0.50 .X ±0.40 .XX ±0.25 .XXX ±0.15 ANG. ±5° |
| 19141 | | MEI | | |
| | | CHECKED BY HZF | | |
| | | DRAWING BY CYP | | UNIT mm |
| SCALE | NONE | REV. | BO | |

| | | | | | |
|-----|------|----|-------------|-----|------------|
| NO. | REV. | BO | NEW RELEASE | HZF | 09/15/2021 |
| | | | REVISIONS | CHK | DATE |