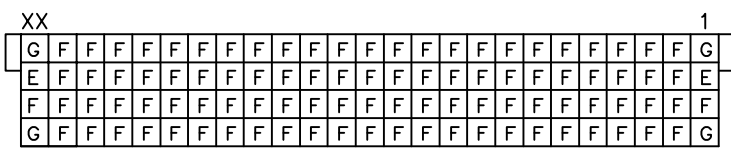
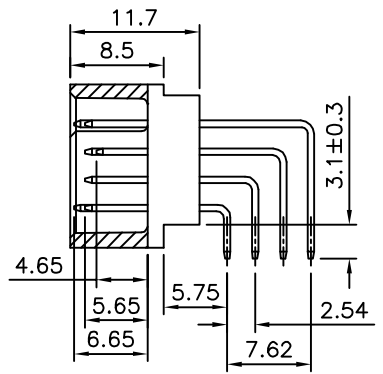
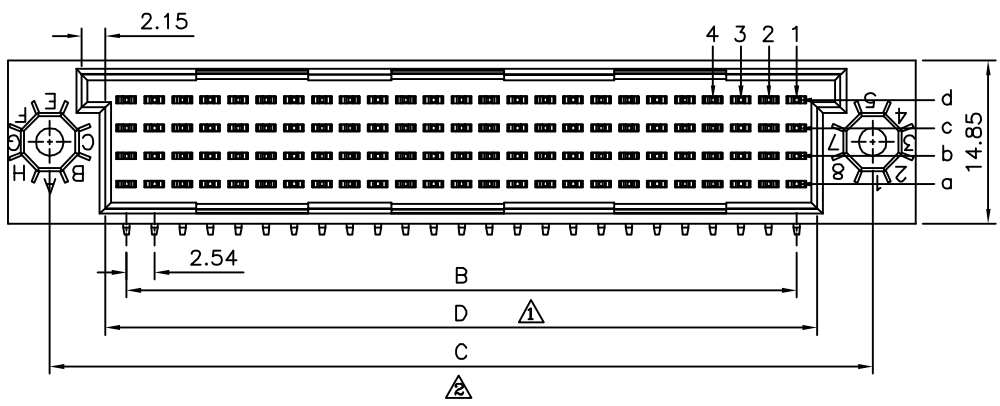
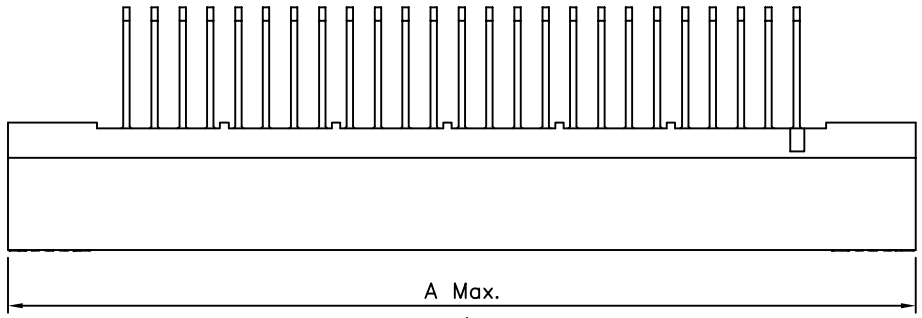


Recommended P.C.B. Layout
(PCB Board Tolerance±0.05)



Columns

SPECIFICATION

Current Rating: 2 Amp
 Dielectric Withstanding Voltage: 1000V AC For 1 Minute
 Contact Resistance: 20 Milliohms Max. At DC 100mA
 Insulation Resistance: 1000 Megaohms Min. At DC 500V
 Operating Temperature: -55°C~+125°C
 Housing: High Temperature Plastic(UL94V-0)
 Contact: Copper Alloy
 Gold Flash On Contact Area, Tin Plated
 On Solder Tails, Over Nickel
 RoHS Compliant

Pin	A	B	C	D
100	82.55	60.96	74.93	65.02
128	100.33	78.74	92.71	82.80
160	120.65	99.06	113.03	103.12
200	146.05	124.46	138.43	128.52
240	171.45	149.86	168.83	153.92

4UCON 元化興業股份有限公司
4UCON TECHNOLOGY INC.

DRAWING No.
18222

APPROVED BY MEI
 CHECKED BY HZF
 DRAWING BY SONG
 REV. A2

UNLESS OTHERWISE SPECIFIED TOLERANCES ARE
 X. ±0.5
 .X ±0.25
 .XX ±0.15

NO.	REV.	REVISIONS	CHK	DATE
A2		Modify Data	HZF	03/08/2012
A1		Modify Data	HZF	10/05/2007
A0		NEW RELEASE	HZF	05/22/2011

SCALE NONE

REV. A2



NO. REV. REVISIONS CHK DATE