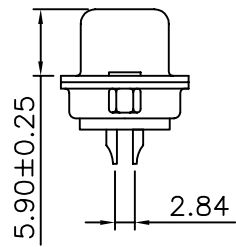
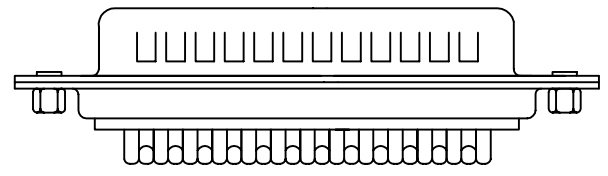
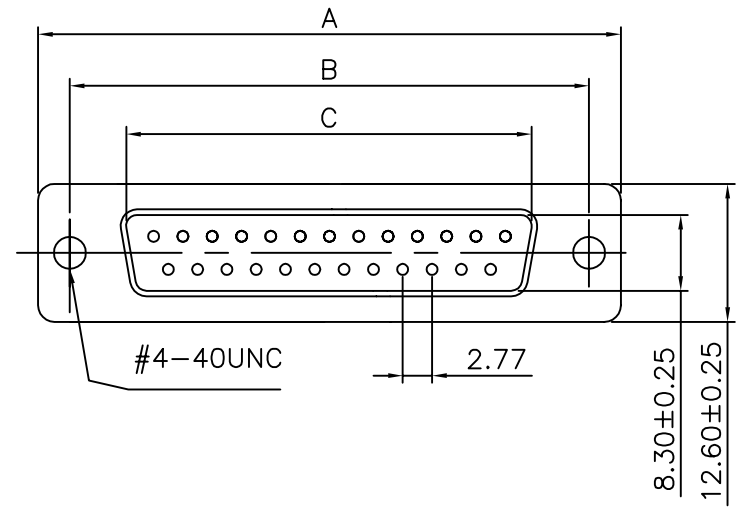


**SPECIFICATIONS:**

Contact Current Rating: 1 Amp  
 Dielectric Withstanding Voltage: AC 500V R.M.S.  
 Insulation Resistance : 500Megohms Min. At DC 500V  
 Contact Resistance: 30Milliohms. Max.  
 Operating Temperature: -55°C ~ +105°C  
 Contact: Brass ,Tin Plated  
 Insulator: P.B.T. UL94V-0 Rated  
 Shell: Cold Rolled Steel, Tin Plated



Positions	A±0.25	B±0.25	C±0.25
09	30.80	25.00	16.92
15	39.20	33.32	25.25
19	44.80	38.86	30.60
23	50.30	44.30	36.10
25	53.05	47.04	38.96
37	69.40	63.50	55.42

**4UCON** 元化興業股份有限公司  
 4UCON TECHNOLOGY INC.

DRAWING No.  
 03198

APPROVED BY MEI  
 CHECKED BY RAN  
 DRAWING BY HZF

UNLESS OTHERWISE SPECIFIED TOLERANCES ARE  
 .X ±0.38  
 .XX ±0.25  
 ANG.

SCALE NONE

REV. A

UNIT mm

AREA	REVISIONS	CHK	DATE